

**TRI  
MO**

ARCHITECTURAL  
SOLUTIONS

**PRODUCT PORTFOLIO**

# CONTENTS

<b>01</b>	<b>COMPANY PROFILE</b>	01
	HISTORY	05
<b>02</b>	<b>SERVICES</b>	07
	TECHNICAL SUPPORT AND CONSULTING	09
<b>03</b>	<b>FAÇADE SYSTEMS</b>	11
	QBISS ONE	13
	QBISS SCREEN	17
	TRIMOTERM	21
	ARTME	27
<b>04</b>	<b>ROOFS</b>	29
<b>05</b>	<b>MODULAR SPACE SOLUTIONS</b>	33
<b>06</b>	<b>FIXING AND DECORATIVE ELEMENTS</b>	37
<b>07</b>	<b>MATERIALS</b>	41
<b>08</b>	<b>PROJECTS IMPLEMENTED AROUND THE WORLD</b>	45





# COMPANY PROFILE





# 01

55+

YEARS OF EXPERIENCE

MORE THAN

50 MILLION M<sup>2</sup>

OF FAÇADES AND ROOFS PRODUCED

PROJECTS IN MORE THAN

100

COUNTRIES WORLDWIDE

MORE THAN

20,000

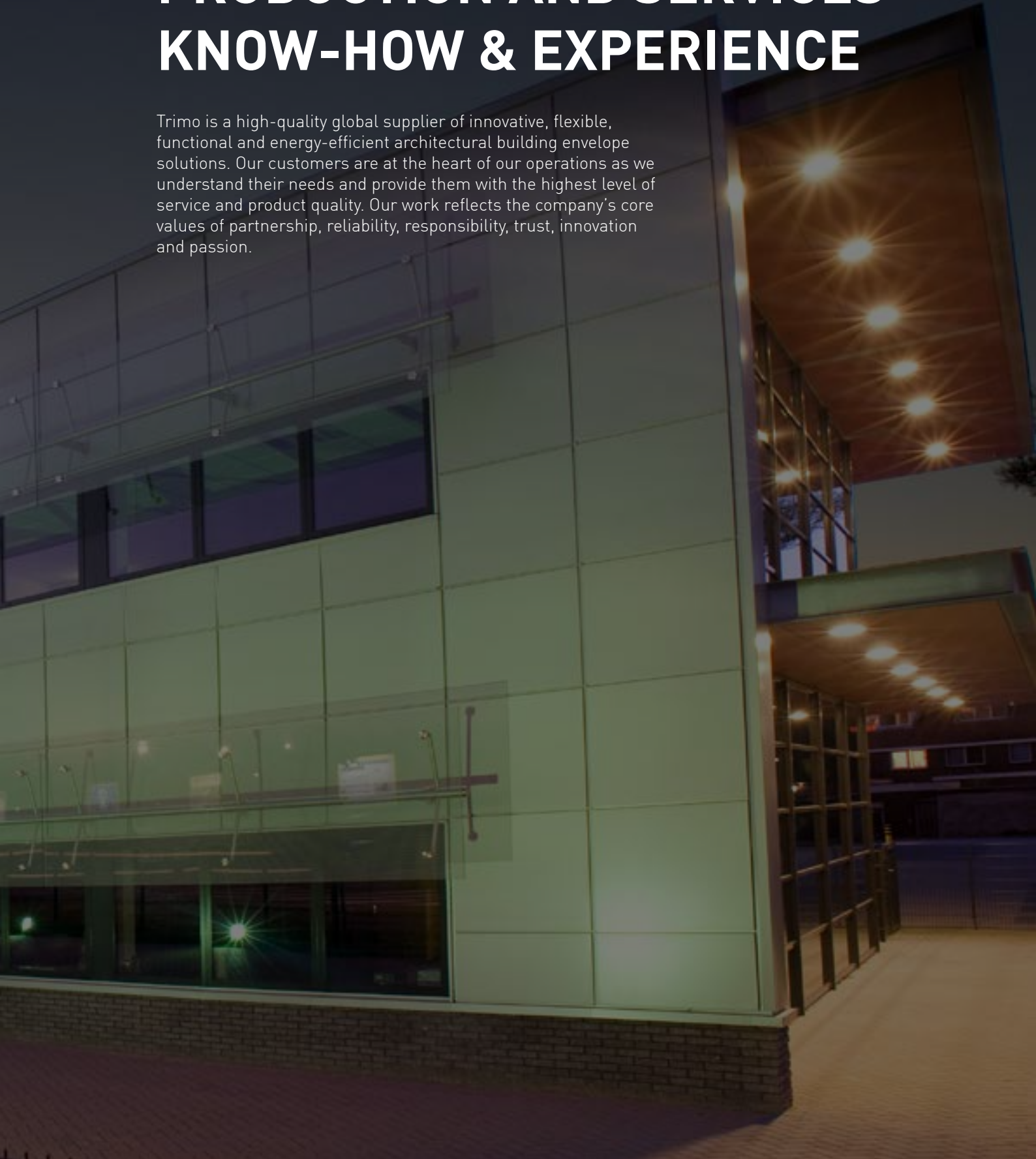
CUSTOMERS & PARTNERS

CE MARKED & CERTIFIED



# WORLDWIDE ENGINEERING, PRODUCTION AND SERVICES KNOW-HOW & EXPERIENCE

Trimo is a high-quality global supplier of innovative, flexible, functional and energy-efficient architectural building envelope solutions. Our customers are at the heart of our operations as we understand their needs and provide them with the highest level of service and product quality. Our work reflects the company's core values of partnership, reliability, responsibility, trust, innovation and passion.



# HISTORY

## DEFINING MOMENTS IN THE HISTORY OF THE TRIMO GROUP

Establishment of Trimo

First in the world to produce **Trimoterm** fireproof panels with mineral wool core on continuous line

Production begins in **Serbia**



Production start of thermal-insulated **PU panels**

First modular **space solution** produced





Innovative  
**Qbiss One**  
façade system  
introduced to the  
market

New **corporate**  
**identity** for  
Trimo Group

2008

2009

2010

2016

2019

Supply of façade panels for construction of the first **CO<sub>2</sub>-neutral building** in the world

**ArtMe** unique façade design receives “**red dot**” product design award

Global launch of **Qbiss Screen** - innovative metal rainscreen



# SERVICES





# 02

# TECHNICAL SUPPORT AND CONSULTING

From an initial idea to the final implementation: the Trimo team supports you at every phase of your project, from planning and architectural design to the construction and handover.

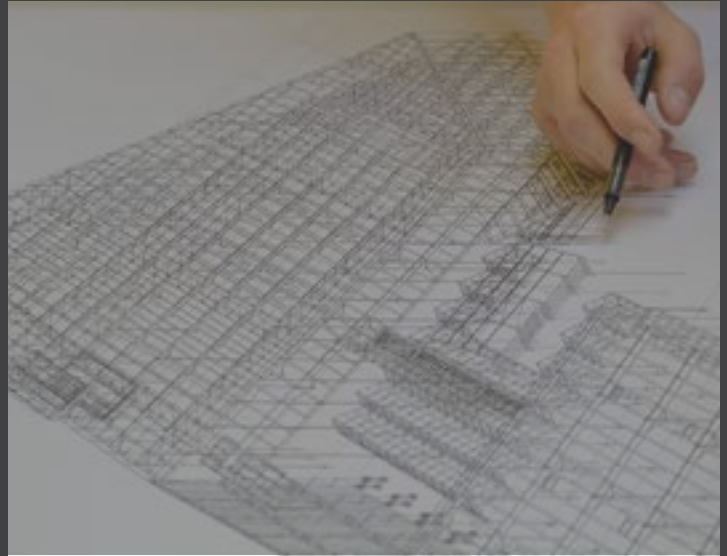


# DESIGN

Trimo's design team is comprised of **architects, designers, structural engineers, and design and project managers** who together make design plans and drawings quickly, efficiently, professionally and with an understanding of the customers' needs and expectations.

The Trimo team of experts monitors the global market by recognising design requirements in accordance with the latest **standards** – European EN norms, German, Russian SNIP, American ASTM, and various others and designs projects according to the individual and specific requirements.

Trimo provides a large range of **architectural and engineering principle details for sandwich panel façades, walls and roofs**. Its team of dedicated technical support and product development specialists is known for giving professional advice on bespoke details and individual custom-made solutions.



# BUILDING INFORMATION MODELLING - BIM

We have developed BIM libraries of our products for the most sophisticated engineering software ArchiCAD and Revit in order to support and speed up the building design process.

Trimo BIM libraries are available at <https://trimo-group.com/en/trimo/downloads/design-tools/bim/>.



# TECHNICAL SUPPORT

The Trimo technical consulting team is a partner you can count on to provide comprehensive **support throughout the entire duration of your project**.

Technical support includes **visualisations, rendering, detailing, BIM** engineering, virtual and augmented reality, **structural calculations** and **management of changes, information and resources**.

The technical consulting team also provides special product solutions designed to perfectly suit your project.



# FAÇADE SYSTEMS



03



# QBISS ONE

Qbiss One is a world-class engineered, prefabricated, A1 mineral wool-insulated, metal façade system that offers a through wall solution within a single piece of construction element. Façade elements with **embossed corners, unmatched flatness** and **advanced technical characteristics** place Qbiss One among the best façade systems in the world.

## TOTAL WALL SOLUTION

- Single component pre-engineered and pre-fabricated construction element
- Self-supporting column to column horizontal or floor to floor vertical installation

## VERSATILE DESIGN POSSIBILITIES

- Embossed element corner design
- Extensive range of interfaces and bespoke elements
- Pre-fabricated corners and curved elements
- 3D corners
- Integrated windows, doors and louvre systems

## MAXIMUM SAFETY

- Class A1 non-combustible mineral wool insulation core
- High-level insulation values up to 0.15 W/m<sup>2</sup>K
- Fire resistance: up to class EI 120 minutes integrity and insulation
- Watertightness up to 1200 Pa
- Flexible coating guaranteed up to 30 years and lifetime expectancy up to 50 years\*

\*terms and conditions apply





# A DESIGN AND TECHNOLOGICAL BREAKTHROUGH



# QBISS ONE DESIGN

Qbiss One and Qbiss Screen are distinguished by the unique embossed corner of the element which results in superior aesthetics without any cuts, folds or welds.



## JOINT OPTIONS

Qbiss One system allows various combinations of recessed and flush joints.

### JOINT OPTIONS FOR HORIZONTAL INSTALLATION



QBISS ONE B-B    QBISS ONE B-BF    QBISS ONE BF-B



QBISS ONE BF-BF    QBISS ONE F-B    QBISS ONE F-BF

### JOINT OPTIONS FOR VERTICAL INSTALLATION



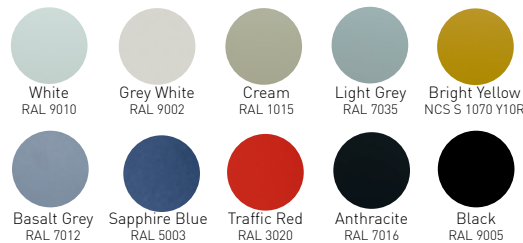
QBISS ONE B-B    QBISS ONE B-BF    QBISS ONE BF-B    QBISS ONE BF-BF



## COLOUR RANGE

External steel skin is available for different corrosion environments of up to C5 (according to classification in EN12944) and is available in a variety of colours. Non-standard colours are available upon request.

### SOLID COLOURS



### SPECIAL METALLIC



### ELEMENTS\*



### STAINLESS STEEL\*\*



\*Colorcoat Prisma and Seren are trademarks of Tata Steel UK Limited  
 \*\*Stainless steel is a bespoke solution and shall be discussed with the Trimo technical department on an individual project basis from an application and availability perspective. Colours may deviate slightly due to different monitors and prints compared to original colours. Trimo can send you a metal swatch upon request.

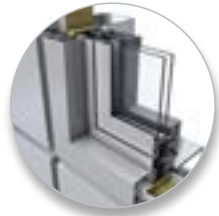
## TYPICAL INSTALLATION DETAILS



BASE DETAIL



TOP PARAPET DETAIL



WINDOW FIXED GLASS



BRICK

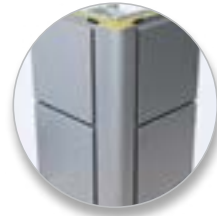
## CORNER ELEMENTS



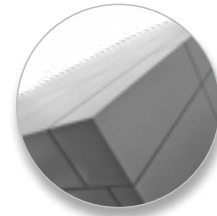
PREFORMED HORIZONTAL SHARP-EDGED CORNER



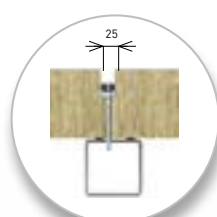
SHARP-EDGED CORNER FLASHING



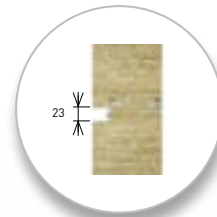
ROUNDED CORNER FLASHING



PREFORMED 3D CORNER



TRANSVERSAL JOINT



LONGITUDINAL JOINT



The Qbiss One **façade element** consists of two galvanised and pre-finished steel sheets bonded to a non-combustible A1 mineral wool core. All the layers together make a solid element with a thickness ranging from 80 – 250 mm.

The Qbiss One system **consists of:**

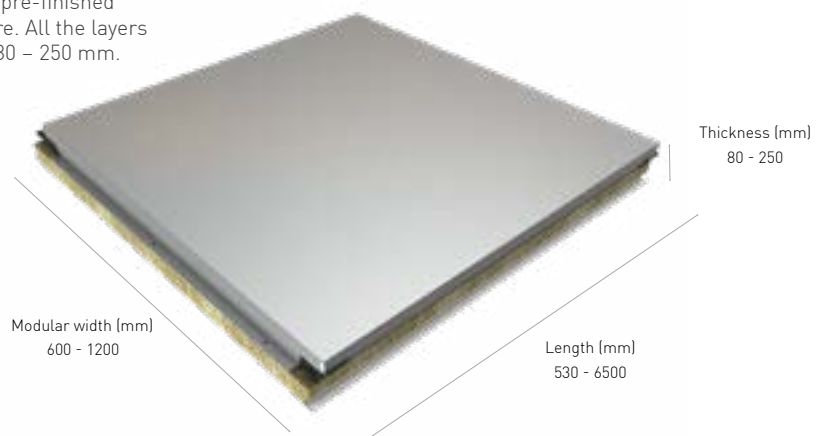
- Modular façade elements
- Fixing and sealing material
- Architectural performance details
- Corner elements
- Adjustable sub-structure (optional)
- Windows (optional)



CURVED FAÇADE ELEMENT



FLAT FAÇADE ELEMENT



FIRE RESISTANCE CLASS UP TO EI 120  
 U VALUE UP TO 0.15 W/m²K  
 WATER PERMEABILITY UP TO 1200 Pa

# QBISS SCREEN

An innovative metal **rainscreen** designed for ventilated façade applications and for both new-build and refurbishment use. It is comprised of an aluminium **honeycomb core**, bonded between two metal skins, with an **embossed corner design**.

It is equally applicable as an exterior and interior wall and soffits bringing a system approach to the building envelope.

**With an extremely flat design**, Qbiss Screen is also engineered to meet the **A2-S1, d0 fire classification** demands and withstands high wind loads to larger spans than conventional rainscreen systems.

## HIGH-QUALITY RAINSCREEN

- Fully prefabricated and self-supporting element
- Embossed corners without cuts, folds or welds
- Extreme element flatness

## VERSATILE DESIGN POSSIBILITIES

- Compatible with Qbiss One façade elements
- Various joint and installation options
- Wide range of colours and material finishes

## MAXIMUM SAFETY

- Class A2 limited combustibility classification
- Quick installation with reduced amount of bearing sub-frame system up to 60%
- Lightweight elements for simple on-site handling and installation

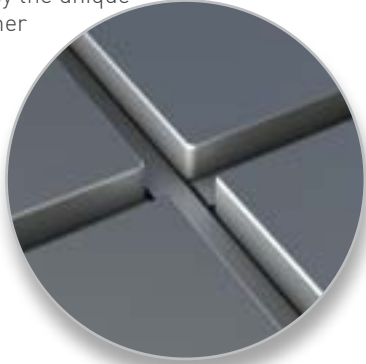


# INNOVATIVE RAINSCREEN



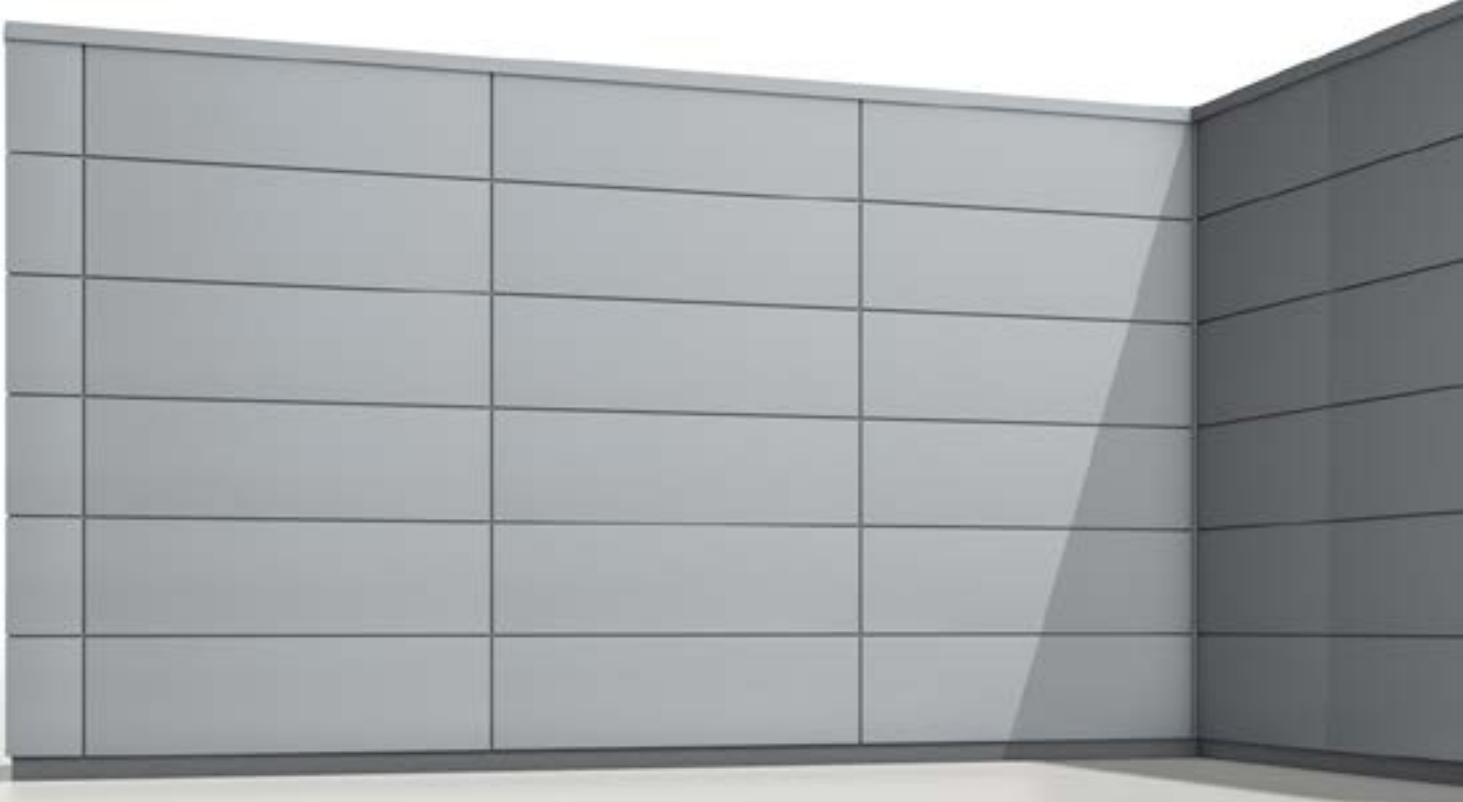
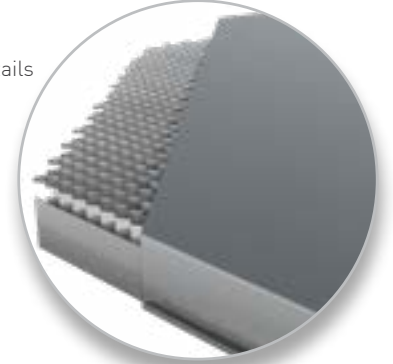
# QBISS SCREEN DESIGN

Qbiss One and Qbiss Screen are distinguished by the unique embossed corner of the element which results in superior aesthetics without any cuts, folds or welds.



## QBISS SCREEN SYSTEM:

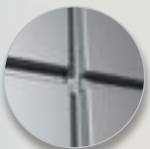
- Modular rainscreen
- Fixing and sealing material
- Architectural performance details
- Corner elements



## JOINT OPTIONS

Qbiss Screen system allows **various combinations of recessed and flush joints** for horizontal and vertical installation.

### HORIZONTAL INSTALLATION



QBISS SCREEN HR B-B



QBISS SCREEN HR F-B

### VERTICAL INSTALLATION

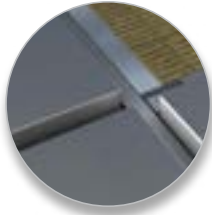


QBISS SCREEN HR B-B

## TYPICAL INSTALLATION DETAILS



TOP PARAPET DETAIL



JOINT DETAIL



DRIP DETAIL

## CORNER ELEMENTS



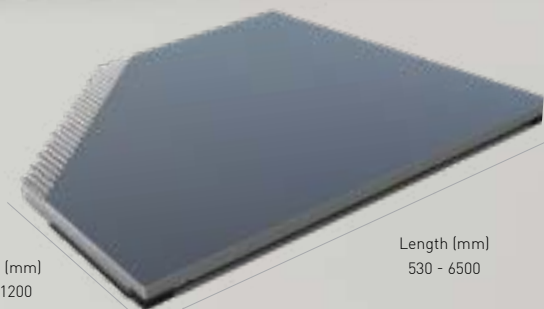
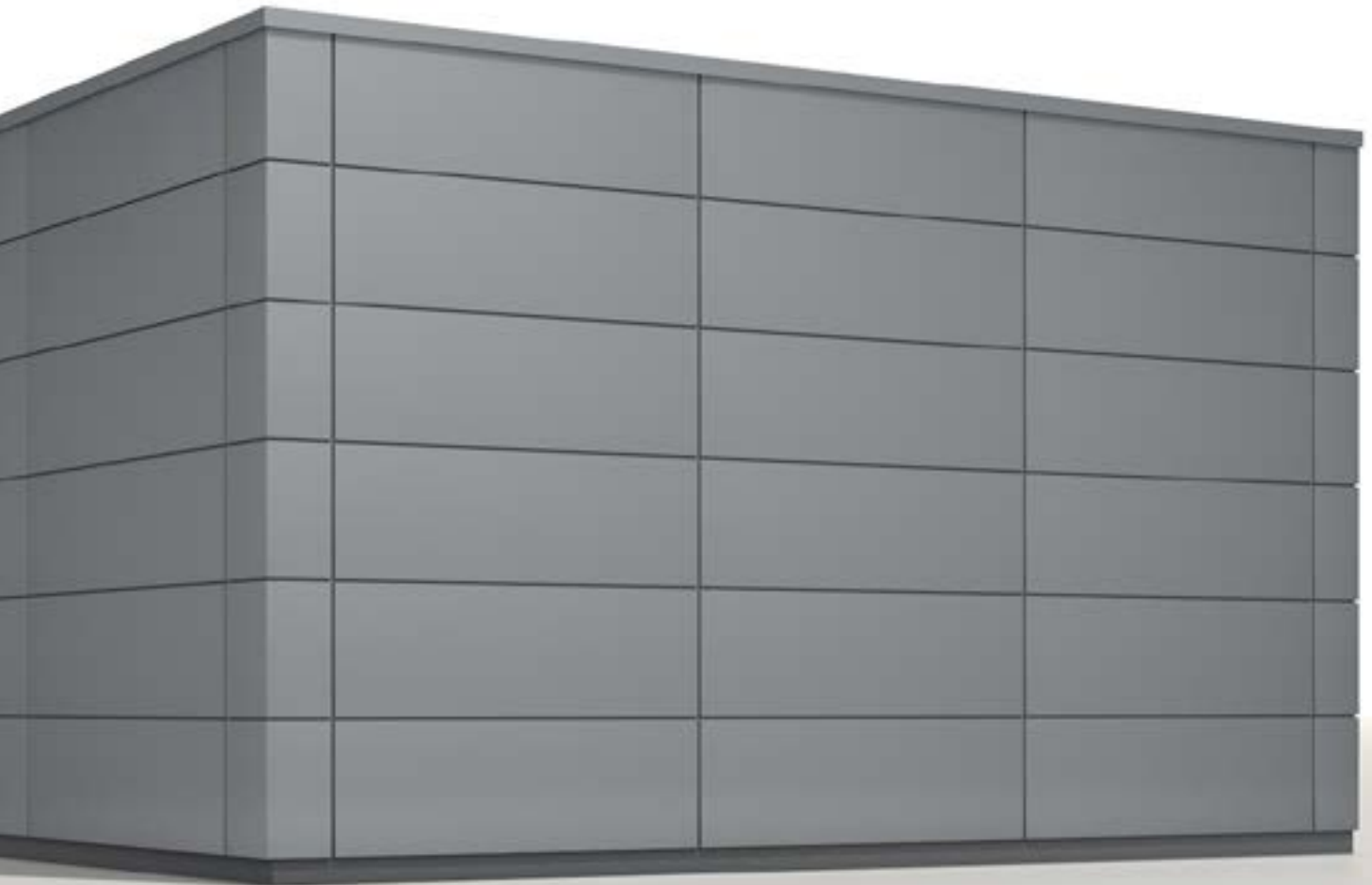
PREFORMED HORIZONTAL  
SHARP-EDGED CORNER



SHARP-EDGED CORNER  
FLASHING



ROUNDED CORNER  
FLASHING



Module (mm)  
600 - 1200

Length (mm)  
530 - 6500

Thickness (mm)  
50

REACTION TO FIRE - ELEMENT (EN 13501-1)  
A2\*

\* According to classification report No. P 1150/17-530-4 (ZAG, 2018)

**TIMELESS INNOVATION**







# TRIMOTERM

The Trimoterm fireproof façade system is a high-quality, versatile and environmentally friendly construction product where the highest demands on **fire resistance, sound reduction** and **thermal insulation** are required. It offers the perfect combination of functionality and durability, whilst also delivering true architectural expression.

Available with a complete system of matching components and meeting country-specific requirements and regulations, Trimoterm is suitable for a wide range of **external façade** and **roof cladding**, internal **partition walls, fire walls and ceilings**. In addition to various industrial, logistic and commercial build applications, Trimoterm panels can also be successfully utilized in the most demanding environments, such as the food processing and pharmaceutical industry, power plants, oil and gas industry applications and many others.

## TOTAL WALL AND ROOF SOLUTION

- Wide range of profile finishes and applications
- Range of ancillary interface items, bespoke solutions, pre-fabricated corners, aluminum extrusions and feature details
- Versatile stand-alone system or carrier structural wall for secondary architectural cladding solutions

## MAXIMUM SAFETY

- Class A1 non-combustible mineral wool insulation core
- Exceptional fire resistance up to class EI 240 minutes of integrity and insulation
- Advanced thermal and sound insulation and structural spanning performance
- Extremely high level of airtightness and watertightness



# TRIMOTERM PRODUCT RANGE

## TRIMOTERM POWER T

Trimoterm Power T are roof and façade panels with superior thermal insulation and can achieve a U-value of as low as 0.16 W/m<sup>2</sup>K.

## TRIMOTERM POWER S

Trimoterm Power S are long-spanning façade panels, which reduce the need for secondary steel constructions.

## TRIMOTERM SOUND

Trimoterm Sound panels serve as exceptional protection against noise hazards as well as contributing to the well-being of everyone in the environment. In addition to the standard characteristics of the Trimoterm panels, acoustic panels also have excellent sound-absorbing characteristics.

## TRIMOTERM BACKING PANEL

The Trimoterm Backing panel is designed for a wide variety of uses for both low and high-rise residential buildings and other type of buildings. Trimoterm sandwich panels are used as a main structural carrier wall with excellent thermal, water and air permeability, and sound performance. It is a replacement for traditional steel framing systems. It provides a reliable, prefabricated, high-quality support wall as a base for different secondary architectural rainscreen finishes.

## TRIMOTERM BLAST

Trimoterm Blast enhanced panels can withstand up to 1.0 bar blasts and are suitable for on and offshore construction. Panels are A60 and H120 fire tested and are fire post blast certified.

## PARTITION WALLS AND CEILINGS

Trimoterm panels are suitable for the construction of partition walls, fireproof separation walls and ceilings.

# TRIMOTERM DESIGN

## JOINT OPTIONS

### TRIMOTERM FTV (STANDARD JOINT)

The standard joint system Trimoterm FTV represents the basic fixing method of Trimoterm panels and is suitable for the horizontal, vertical and segmental installation of panels.



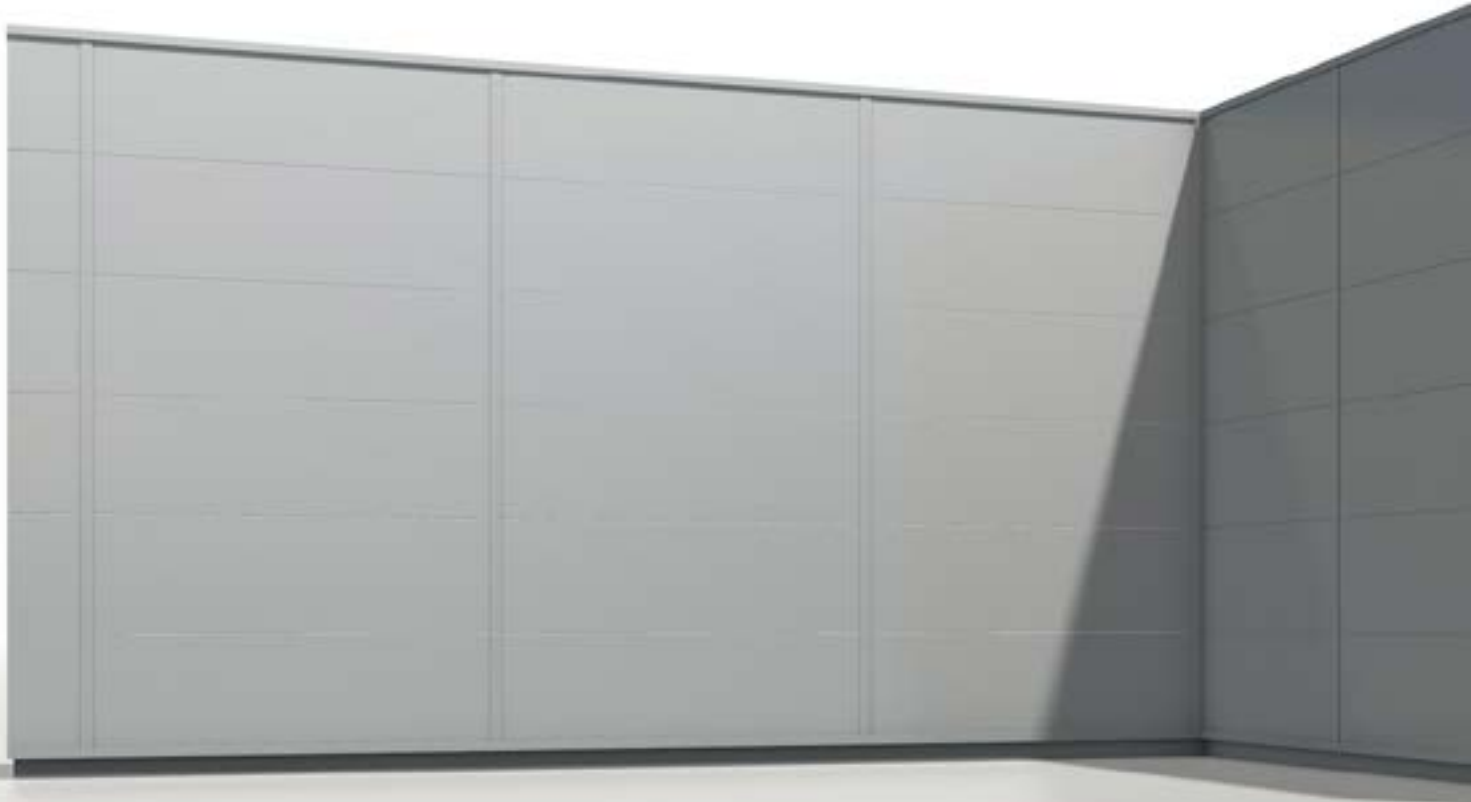
TRIMOTERM FTV  
(STANDARD JOINT)

### TRIMOTERM FTV HL (HIDDEN JOINT)

The hidden joint system Trimoterm FTV HL offers a clean façade look with no visible fixings. Trimoterm panels with a hidden joint are mainly intended for vertical installation, but under certain conditions and with limitations, can also be used for various horizontal cladding applications.



TRIMOTERM FTV HL  
(HIDDEN JOINT)



## COLOUR RANGE\*

Trimoterm steel sheet metal is hot galvanised in compliance with EN 10346, and additionally protected by an organic coating in accordance with the coil-coating process (DIN EN 10169/1). The following basic types of organic coatings are applied to steel sheet metal based on:

- SP polyester
- PVDF polyvinylidene fluoride
- PUR polyurethane
- PVC polyvinyl chloride, coating or film

A wide range of colour finishes is available for any building, which are engineered to capture the perfect look of the building design, both internally and externally.



\*Colours may deviate slightly due to different monitors and prints compared to original colours. Trimo can send you a metal swatch upon request.

## PANEL PROFILES

Trimoterm fireproof panels are distinguished by a wide range of profiles that enable the design of a large number of different solutions, tailored to individual buildings.



SMOOTH PROFILE (G)



MICRO-LINED PROFILE (M)



S - PROFILE (S)



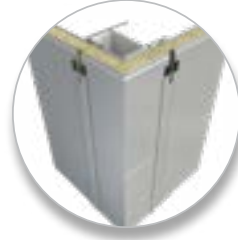
V - PROFILE (V)

Full range available at:  
<https://www.trimo-group.com/en/products/facades-and-walls/trimoterm/panel-profiles>

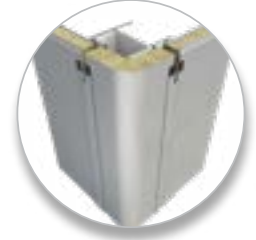
## SYSTEM

Trimoterm offers a wide range of versatile accessories, including fasteners for fixing panels and flashings, sealants, aluminium extrusion profiles and flashings.

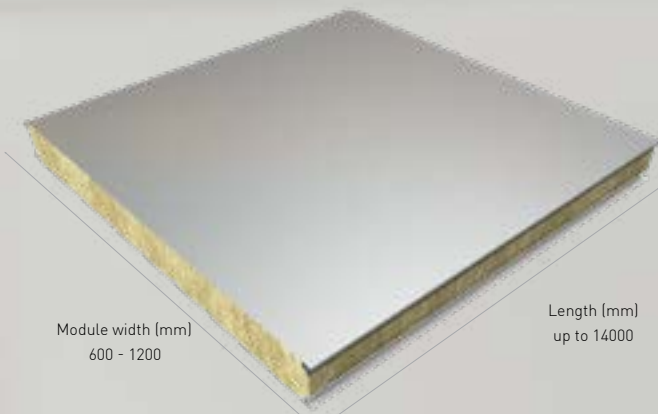
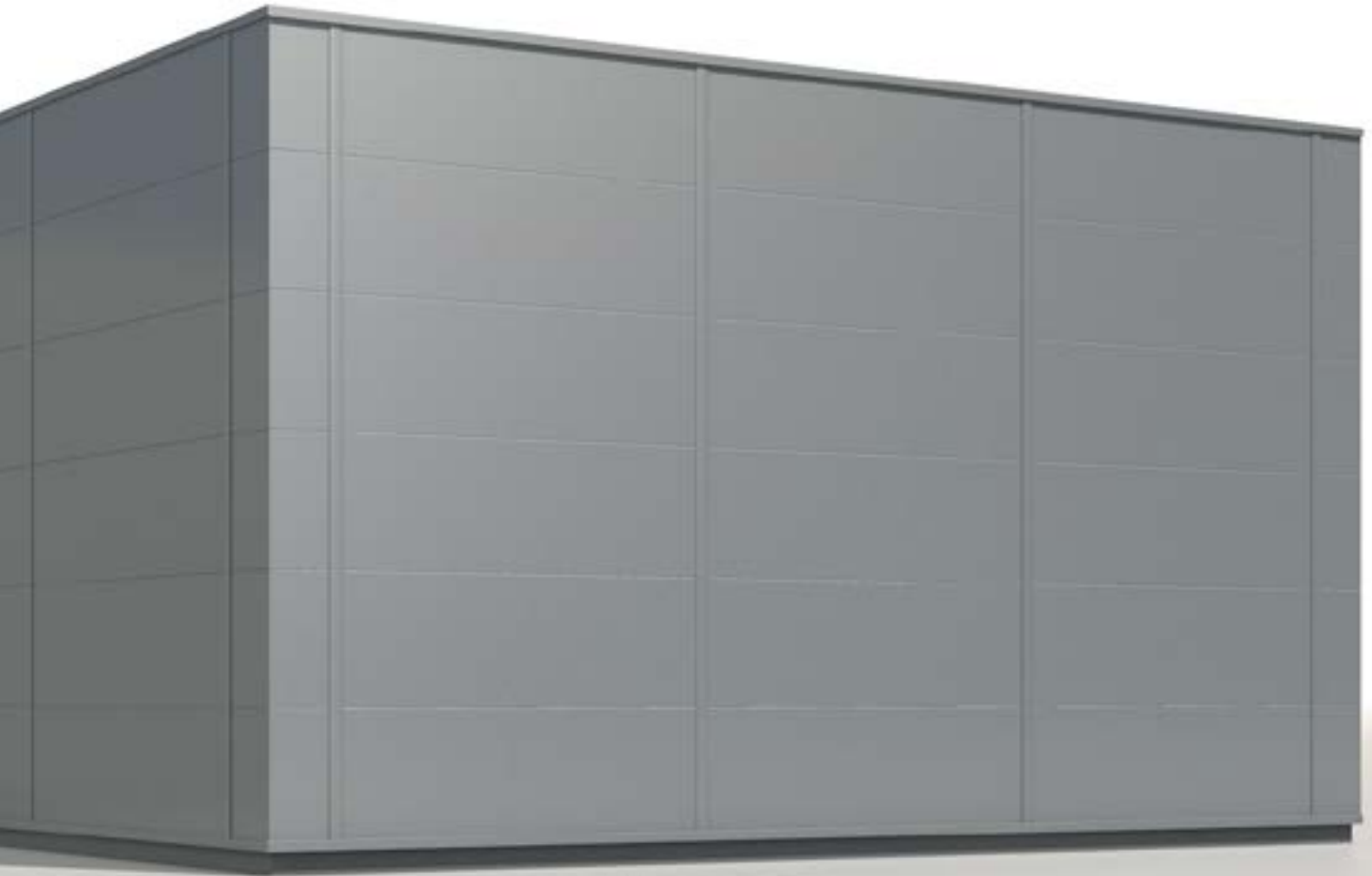
**Rounded** and **sharp-edged pre-fabricated corners** from Trimo's portfolio of façade finishing elements, in a creative combination with façade panels, provide special aesthetic effects. They can be used on vertically installed panels, or with a combination of horizontally installed façade panels and a vertically installed corner.



PRE-FORMED SHARP-EDGED CORNER



PRE-FORMED ROUNDED CORNER



Module width (mm)  
600 - 1200

Length (mm)  
up to 14000

Thickness (mm)  
50 - 250

NON-COMBUSTIBLE MINERAL WOOL CLASS A1  
FIRE RESISTANCE CLASS UP TO EI 240  
U VALUE UP TO 0.16 W/m<sup>2</sup>K

# ARTME

ArtMe surface treatment that allows unlimited shapes, patterns and visual effects to be expressed on the façade for dramatic, individual and creative results. From designs and pictures to inscriptions, logos, brands and bespoke creations.

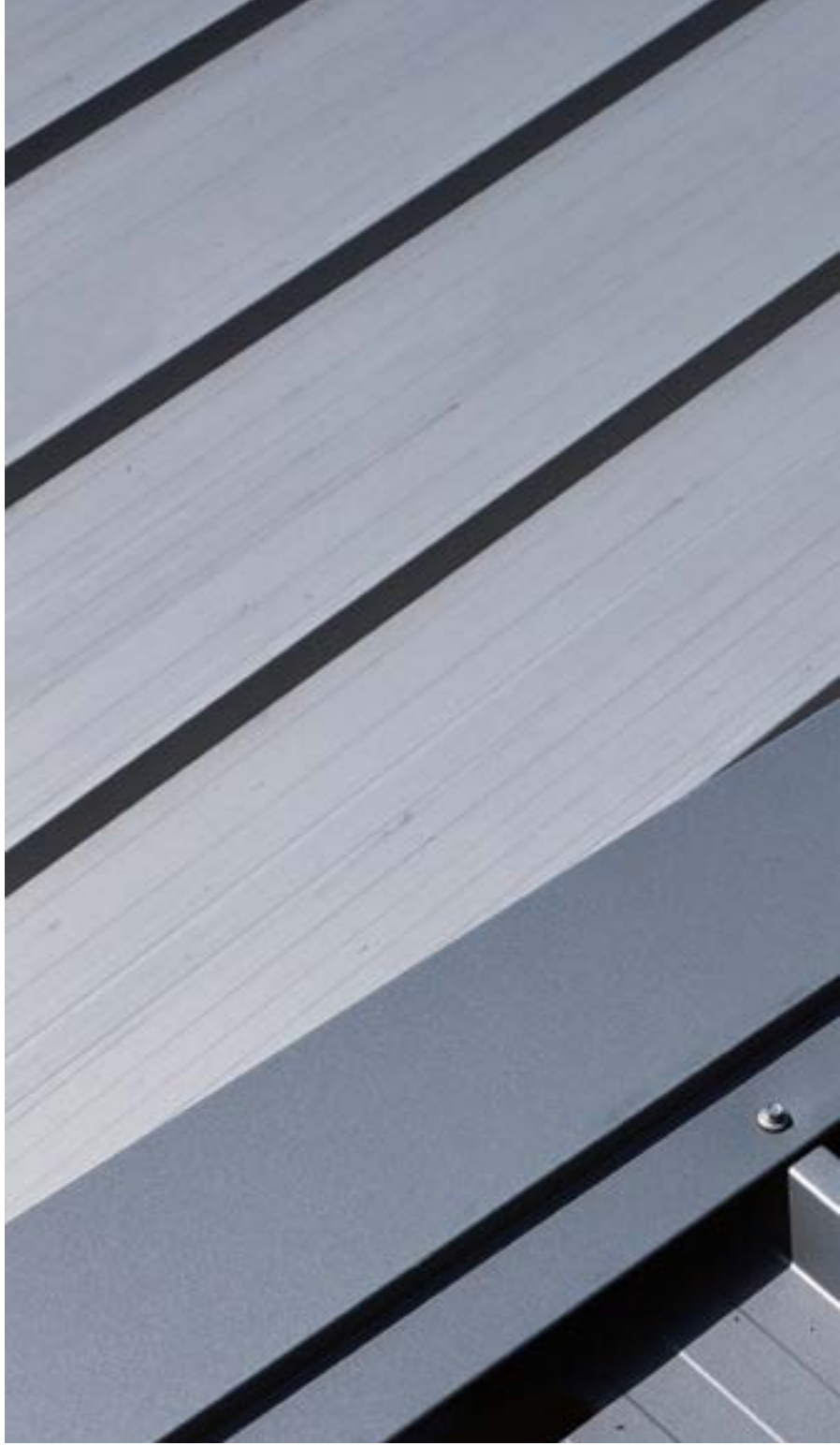
ArtMe uses a highly controlled **3D-forming technology**, which is being used for the first time on complete façade elements with pre-coated steel-sheet surfaces. Recognising the importance of product performance, the original integrity and characteristics of the façade elements are preserved without compromise.



reddot design award



# ROOFS







# 04

# TRIMOTERM SNV (ROOF PANELS)

Trimoterm fireproof roofs are the perfect solution for pitched roofs. Thanks to the excellent technical characteristics and the complete range of technical solutions and elements, the Trimoterm roof system provides the perfect protection against harsh weather conditions. Trimoterm roofing systems are an excellent product to provide protection from weather and climate influences.

## FIRE RESISTANCE

- Excellent fire resistance of up to 180 min

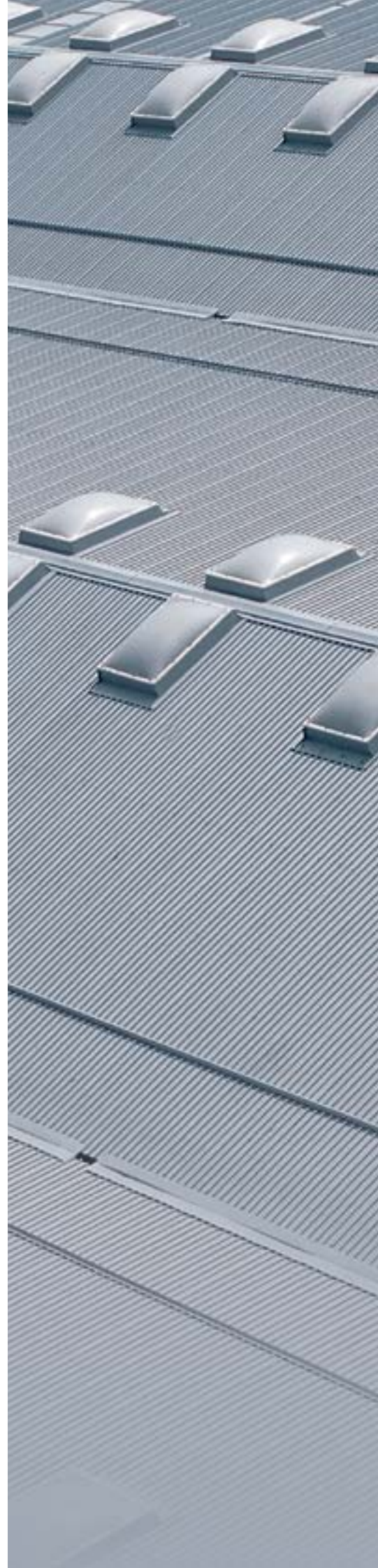
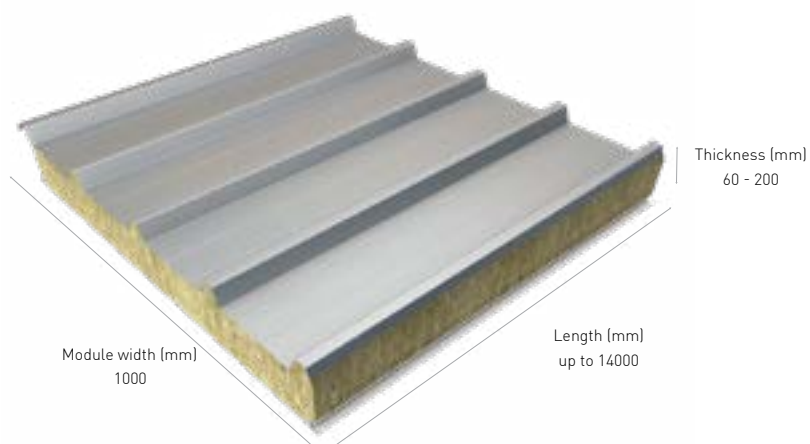
## TOP STRUCTURAL PERFORMANCE

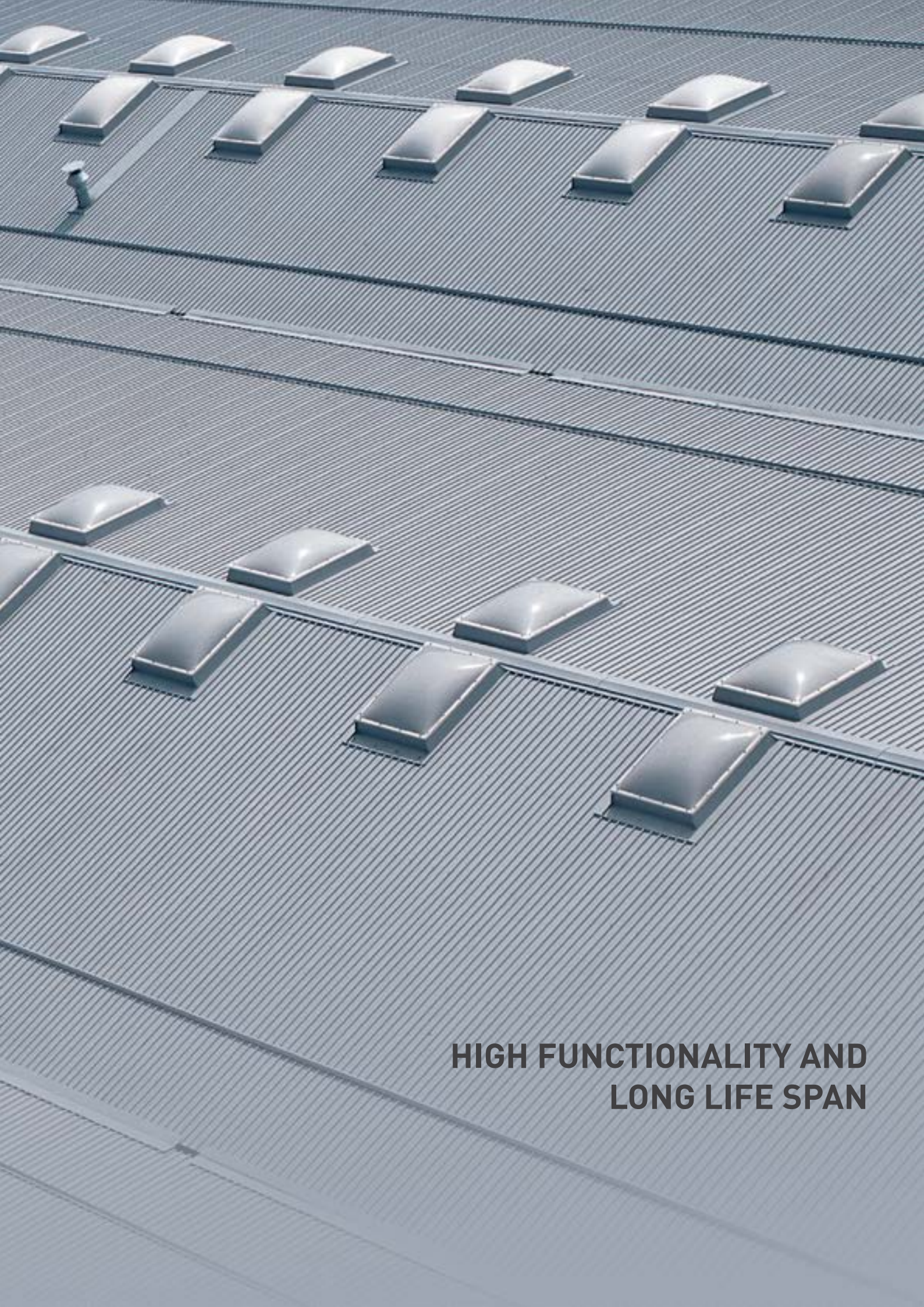
## QUALITY

- Outstanding quality and functional solutions with a long life span

## INSULATION

- Excellent thermal and sound insulation





**HIGH FUNCTIONALITY AND  
LONG LIFE SPAN**

# MODULAR SPACE SOLUTIONS



# 05



# MODULAR SPACE SOLUTIONS

Trimo is one of the leading providers of modular space solutions, **with over 30 years of experience and more than 100,000 units manufactured and supplied worldwide** to date.

Trimo modular space solutions are used extensively by private and public companies as **temporary or permanent, easy to set up and efficient** accommodation, offices, showrooms, hotels, schools and nurseries, infrastructure buildings, etc.

Trimo modular **units** are **efficient, innovative and sustainable; made from natural materials and almost 100% recyclable**. Modular units can be shipped assembled or, to keep transport costs to a minimum, supplied flat-packed for on-site installation with the minimum number of tools. Units can also be easily disassembled after use and transferred to a new location.

## PROVEN QUALITY

- 30 years of experience

## FLEXIBLE DIMENSIONS

- Length up to 30 ft, width up to 10 ft, height up to 12 ft, non-standard modular unit sizes are available too

## ENERGY-EFFICIENT

- Thermal conductivity values (U) for walls, floor and ceiling as low as 0.16 W/m<sup>2</sup>K

## FIRE SAFETY

- Wall panels are EI fire resistance class certified (EI 30 – EI 240)

## EASY TO TRANSPORT AND RELOCATE

- Flat-packed or fully factory assembled, completely interchangeable wall panels

## LONG-TERM ECONOMIC BENEFITS

- Easy to build and install, designed to be used on many consecutive projects over a long period of time

More information about Trimo modular space solutions at:  
[www.trimo-mss.com](http://www.trimo-mss.com)



**QUICK, SAFE AND RELIABLE**



# FIXING AND DECORATIVE ELEMENTS





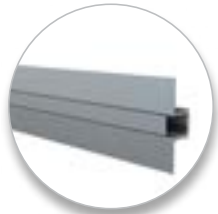


06

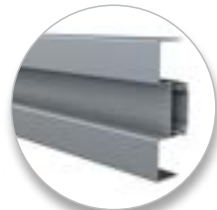
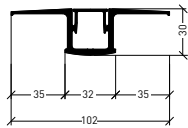
# STUNNING FINISHES

Trimo decorative elements emphasise the selected façade line, cover visible panel joints and give the building a touch of elegance. You can choose from various different options, manufactured from extruded and powder-coated aluminium.

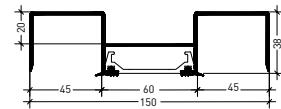
## FIXING ELEMENTS



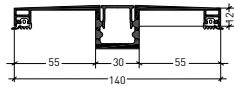
HF 102 - OMEGA PROFILE



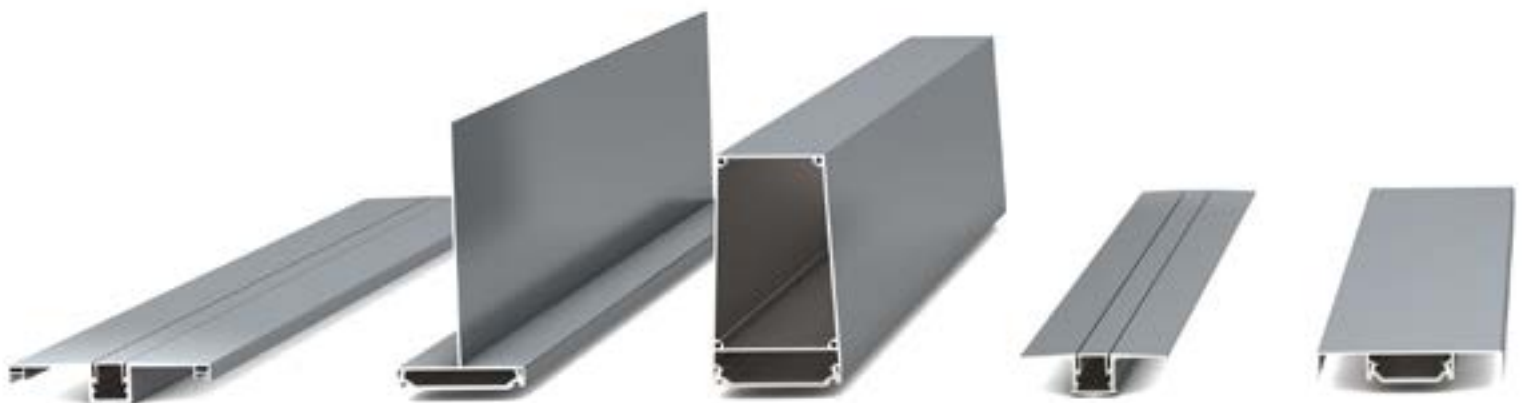
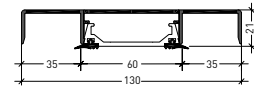
HF6 - DECORATIVE OMEGA PROFILE



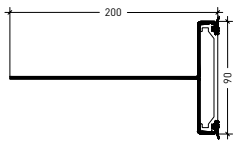
HF140 - DECORATIVE OMEGA PROFILE



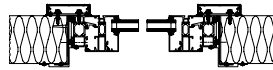
HF4 - DECORATIVE OMEGA PROFILE



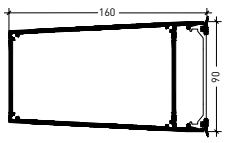
# DECORATIVE ELEMENTS



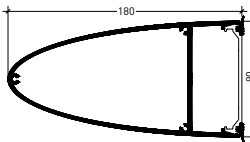
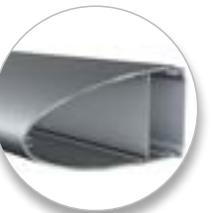
HF1 - T PROFILE



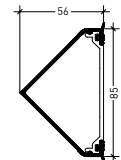
HF5 - DECORATIVE WINDOW PROFILE



HF2 - TRAPEZOID PROFILE



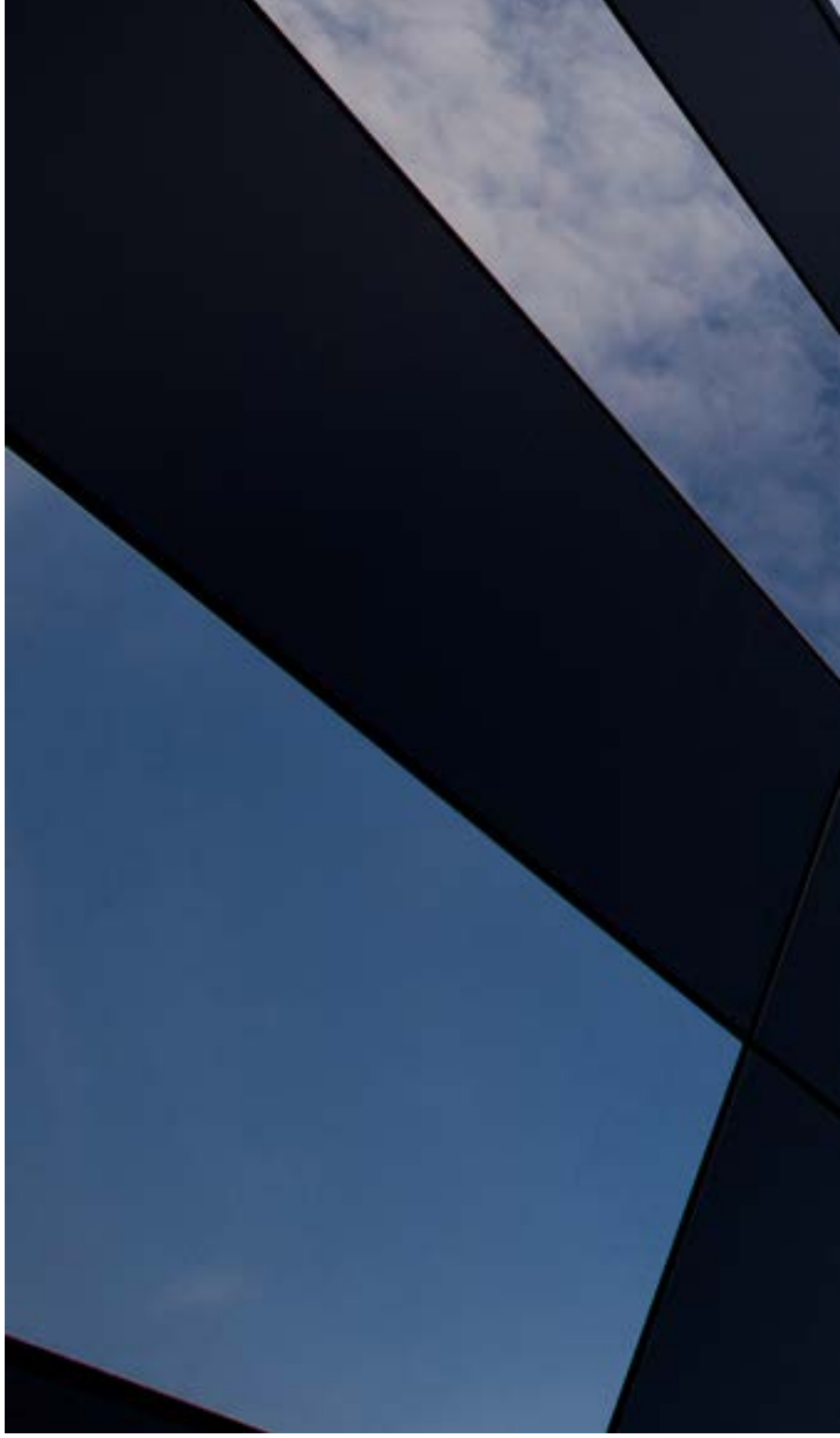
HF8 - ELLIPTICAL PROFILE



HF7 - TRIANGULAR PROFILE




# MATERIALS





# 07

A photograph of a modern building at night. The building's facade is a vibrant, glossy red, composed of large rectangular panels. A large, overhanging roof structure extends from the building, also finished in the same red material. The roof is illuminated from below, creating a warm glow. On the right side of the building, there is a wall with eight circular windows arranged in two rows of four. The ground in front of the building is a reddish-brown color, possibly a paved area, and is lit with several small, recessed lights. In the background, a dark blue sky and a fence are visible.

**ALL TRIMO PRODUCTS ARE BUILT FROM THE HIGHEST QUALITY MATERIALS. WITH EXCEPTIONAL TECHNICAL CHARACTERISTICS AND PERFECTED VISUAL EXPRESSION, TRIMO PRODUCTS EXCEL NOT ONLY IN DESIGN BUT ALSO IN THEIR PERFORMANCE.**

# MINERAL WOOL

- Class A1 non-combustible reaction to fire classification
- High density 90-120 kg/m<sup>3</sup> for superior structural strength
- Environmentally friendly, landfill disposal as non-hazardous waste
- Recycling costs up to 5 times less vs PIR/PUR insulation
- Does not absorb water
- Retains the thermal and structural performance throughout its lifetime
- Does not provide the environmental conditions for bacteria growth and rodent animals, thus is also suitable for construction in the food & pharmaceutical industries, clean rooms, etc.

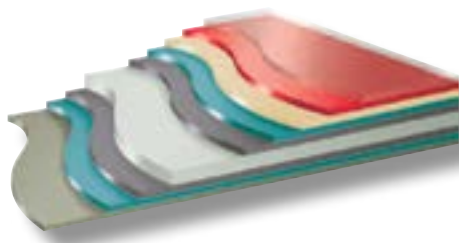
# STEEL AND COATING SELECTION

- External steel sheet thickness 0.50 to 0.70 mm
- Internal steel sheet thickness 0.50 to 0.60 mm
- Base substrate galvanised [Zn, ZnMg, ZnAl]

## PAINT COATING TYPES

- Standard polyester paint SP 25 micron (suitable for C2-C3 corrosion climate environment)
- Polyvinylidene fluoride paint PVDF 25 to 42 micron (suitable for C3-C4 corrosion climate environment)
- Polyurethane paint PUR 50 to 65 micron (suitable for C4-C5 corrosion climate environment)
- PVC laminate coating PVC 120 to 150 micron (suitable for C3-C4 corrosion INTERNAL climate environment)

**Guarantee period is directly influenced by the selected paint coating and corrosion climate environment**



COLORCOAT PRISMA\* PUR COATING STRUCTURE

### Key

- |  |                                 |
|--|---------------------------------|
| ■ 15µm additional protective clear layer   | ■ Base steel substrate          |
| ■ 25µm coloured layer with polyamide beads | ■ Galvalloy® metallic coating   |
| ■ 25µm corrosion resistant primer          | ■ Pre-treatment                 |
| ■ Pre-treatment                            | ■ High performance backing coat |
| ■ Galvalloy® metallic coating              |                                 |

\*Colorcoat Prisma is a trademark of Tata Steel UK Limited

## Risk of corrosion - Classification of ambient conditions according to EN ISO 12994-2

Corrosion risk category	Examples of typical environments	
	External	Internal
<b>C1 Very low</b>	-	Isolated building. Relative humidity of air: less than 60%
<b>C 2 Low</b>	Slightly polluted atmosphere, dry climate e.g. rural areas	Non-isolated building with temporary water condensation e.g. warehouses, sport halls
<b>C 3 Medium</b>	Urban or industrial atmosphere with low level of CO <sub>2</sub> pollution or coastal areas with low salinity	Premises characterised by high relative humidity of the air and impurities, e.g. breweries, laundries, dairies
<b>C 4 High</b>	Industrial or coastal atmosphere with low salinity	Swimming pools, chemical factories
<b>C 5 Very High I</b>	Industrial atmosphere with considerable humidity and aggressive atmospheres	Buildings or areas with almost continuous water condensation and high levels of pollution
<b>C 5 Very High M</b>	Coastal area with high salinity	

# PROJECTS IMPLEMENTED AROUND THE WORLD





# 08



# PORSCHE CAR SHOWROOM





**LOCATION**  
SWITZERLAND

**YEAR OF COMPLETION**  
2017

**ARCHITECT**  
GOLDBECK RHOMBERG AG

**PRODUCT**  
QBISS ONE



# EQUINIX LD6 DATA CENTRE





**LOCATION**  
UNITED KINGDOM

**YEAR OF COMPLETION**  
2015

**ARCHITECT**  
ARUP ASSOCIATES

**PRODUCT**  
QBISS ONE

# COMMERCIAL CENTRE MANGO





**LOCATION**

SPAIN

**YEAR OF COMPLETION**

2015

**ARCHITECT**

GCA ARQUITECTURA

**PRODUCT**

QBISS ONE

# COMMERCIAL CENTRE HOME







**LOCATION**  
UNITED KINGDOM

**YEAR OF COMPLETION**  
2015

**ARCHITECT**  
MECANOO ARCHITECTEN B.V.

**PRODUCT**  
QBISS ONE

# RESEARCH INSTITUTE ELI-ALPS





**LOCATION**  
HUNGARY

**YEAR OF COMPLETION**  
2017

**PRODUCT**  
QBISS ONE



BRECON CLEANROOM SYSTEMS B.V.





**LOCATION**  
THE NETHERLANDS

**YEAR OF COMPLETION**  
2017

**PRODUCT**  
QBISS ONE



# ORTERER GRUPPE LOGISTICS CENTRE





**LOCATION**  
GERMANY

**YEAR OF COMPLETION**  
2016

**ARCHITECT**  
KEHRBACH PLANWERK

**PRODUCT**  
QBISS ONE



HEADQUARTERS HEKA HERZOG







**LOCATION**

GERMANY

**YEAR OF COMPLETION**

2018

**PRODUCT**

QBISS ONE

# PARTYRENT LOGISTICS CENTRE





**LOCATION**

GERMANY

**YEAR OF COMPLETION**

2013

**ARCHITECT**

JAROSCH ARCHITEKTUR DARMSTADT

**PRODUCT**

QBISS ONE

# HEADQUARTERS

## TRIMO D.O.O.

PRIJATELJEVA CESTA 12,  
8210 TREBNJE, SLOVENIA

T: +386 (0)7 34 60 200

F: +386 (0)7 34 60 127

TRIMO@TRIMO-GROUP.COM

WWW.TRIMO-GROUP.COM

# GLOBAL PRESENCE

Find your local contact



# DOWNLOADS

## BROCHURES

- Façade systems
- Roof systems
- General



## TECHNICAL DOCUMENTS

- Façade systems
- Roof systems
- Structural performance



## DESIGN TOOLS

- CAD details
- BIM product libraries



Trimo Group holds full copyrights on the information and details provided in this document, therefore any unauthorised reproduction and distribution is strictly prohibited. Professional Care has been taken to ensure that the information/details are accurate, correct, complete and not misleading. However, Trimo, including its subsidiaries, does not accept responsibility or liability for errors or information, which is found to be misleading. Information/details in this document are for general purposes only. It is the user's responsibility to check compliance with local laws. Any deviations in details and project solutions are the user's responsibility. Under no circumstances, will we be liable for any loss or damage including without limitation, indirect or consequential loss or damage, or any loss or damage whatsoever arising from lost profits as a result of or in connection with the use of this document. All information issued by Trimo Group is subject to continuous development and information/details contained in this document were current on the date of issue. It is the user's responsibility to obtain the most up-to-date information from Trimo when information/details are used for a project.

The latest version of the document is available at [www.trimo-group.com](http://www.trimo-group.com). The latest version of the published document in English prevails over other translated documents.

For information about the delivery of panels see Trimo's General conditions  
(<https://trimo-group.com/en/trimo/general-conditions-of-sale>).